

Using Your Elmo Document Camera (DC) with Windows

What Do You Need:

- 1 – USB Cable
- 2 – Image Mate Software – visit elmousa.com and go to Downloads. Find your model of DC and install

What Can you Do with your DC:

- 1 – Use the DC as a scanner
- 2 – Use the DC as a video camera

Viewing Your DC image on your Computer

- 1 – Open Image Mate. A live capture of what you are viewing with your DC should appear
- 2 – Click on the **Live Image** button if necessary



Capturing Images from your DC:

- 1—Launch **Image Mate**
- 2—Zoom into your image using the zoom control on your DC or in the Image Mate Software
- 3—Click on the **Image Capture** button



Capturing Video from your DC:

- 1 – Launch Image Mate
- 2 – Click on the **Recording Tools** button



Other Tools:

- Remote Control (Zoom & Auto Focus remotely)
- Draw (Annotate on any image)

NOTE: Hover over a tool to see what it does



Steps to create a video recording with Image Mate

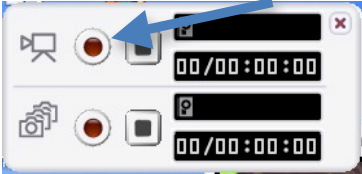
Capturing Video from your DC:

1 - Launch Image Mate

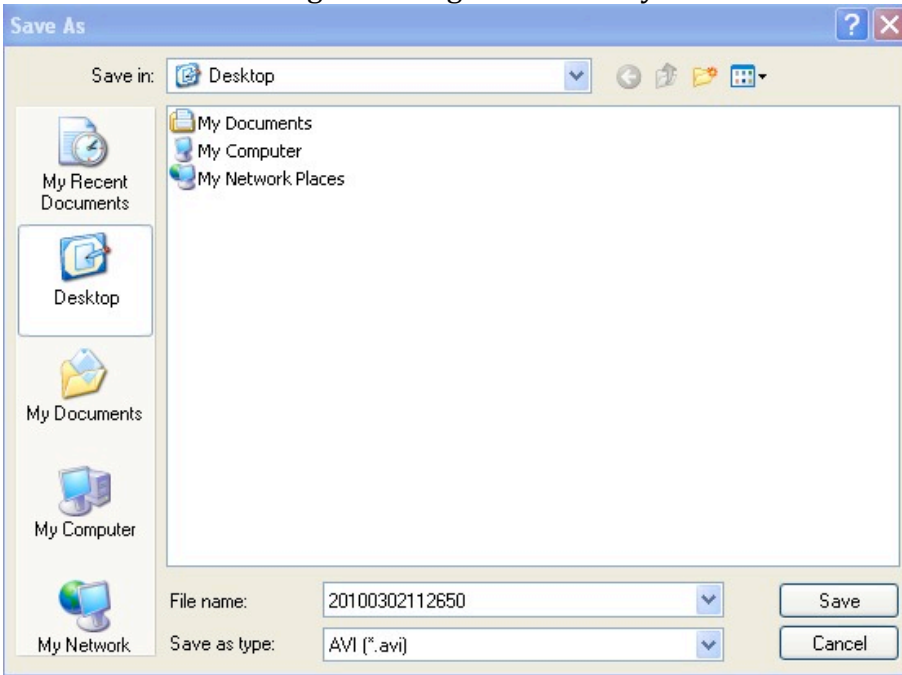
2 - Click on the **Recording Tools** button



3 - Click on the **Record** button

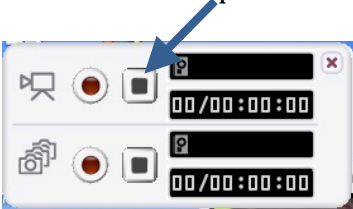


4 - Name the recording and navigate to where you want the file to be saved



5 - Create your recording (manipulate, narrate...)

6 - Click the **Stop** button when finished recording



**** Your video shows up in the location you indicated****

7 - **Double-Click** the video file to watch it

****Your video will open in Windows Media Player****